

DoubleTapp Installation

Instructions



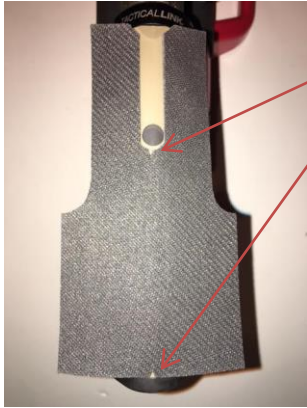
- Before Installation, preform safety check by insuring the rifle is clear of any magazine and there's no round in the chamber.
- Place the rifle on a work bench if available; if not, the rifle may be placed between the legs with the barrel securely rested on the floor on a non-slip surface.
- Lock bolt carrier group to the rear so that the charging handle can move freely.



- Clean surface of stock thoroughly with 70% Isopropyl alcohol and let dry completely. If the stock is heavily contaminated with dust or gun lubricating oil, consider washing it with dishwashing soap and sponge, drying it thoroughly and followed by the 70% Isopropyl alcohol.



- Remove the protective backing from the double sided adhesive of the buttstock pad. (Note: A sharp knife or razor may be needed to separate the "peel tabs" away from the rest of the pad, being careful not to cut all the way through the paper backing)



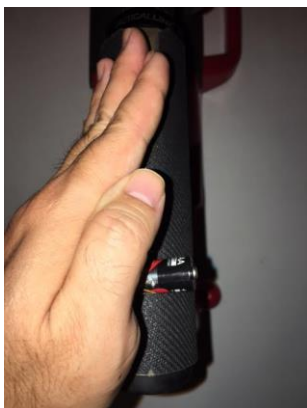
- Gently place the buttstock pad on the stock using the “triangular notches” at the bottom of the pad and at the bottom of the “U” shape channel to center the pad with the natural center line of the stock created during the manufacturing process. (There’s a natural center line seam on the stock created from the molding process.)
- Insure that there is equal amount of spacing on both sides of the center line of the stock and the “U” shape channel is parallel to the center line.



- Pull the charging handle completely to the rear and insure that there is equal amount of spacing on both sides of the charging handle.



- Gently roll the padding into place starting from the top to the sides and from the rear and working towards the front with the “U” shape channel. Be sure to apply some pressure to the “U” shape channel with one finger while using the other hand to roll the padding into place to insure that the channel does not shift or move during this process. **(Note: there’s no stretching or pulling required since each padding is custom cut to the exact dimensions of each stock.)**



- To insure proper adhesion and contact on all surfaces, place either a “C” or “D” battery between the palm of your hand and roll the battery across all surface of the buttstock pad especially around the edges and around the “U” shape channel.